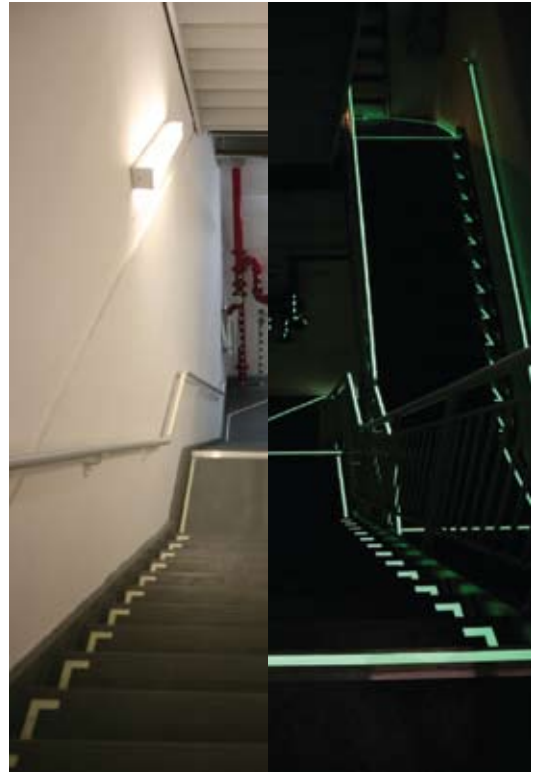
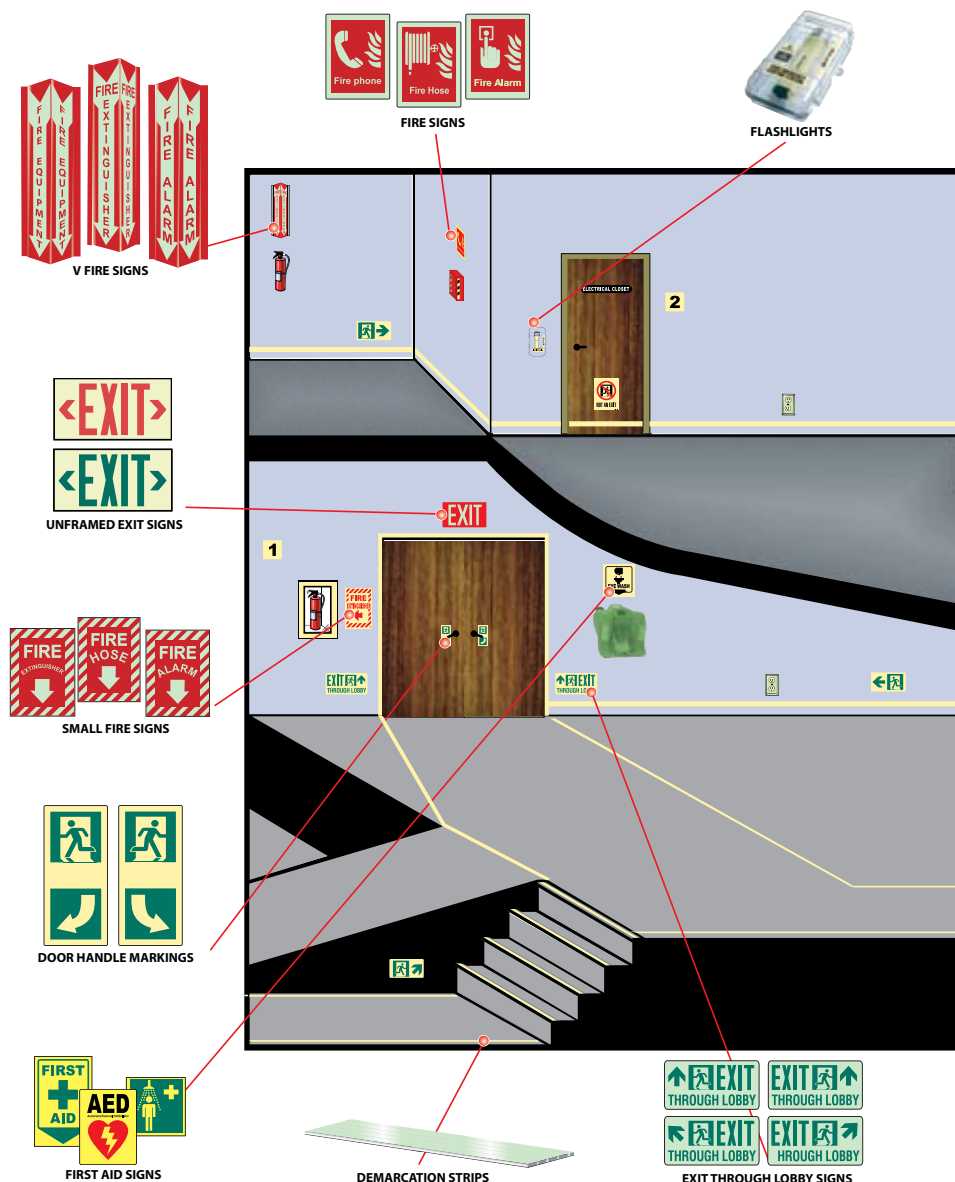


SAFETY GLOW





All products illustrated on this page are offered by STANDARD.

ABOUT PHOTOLUMINESCENCE

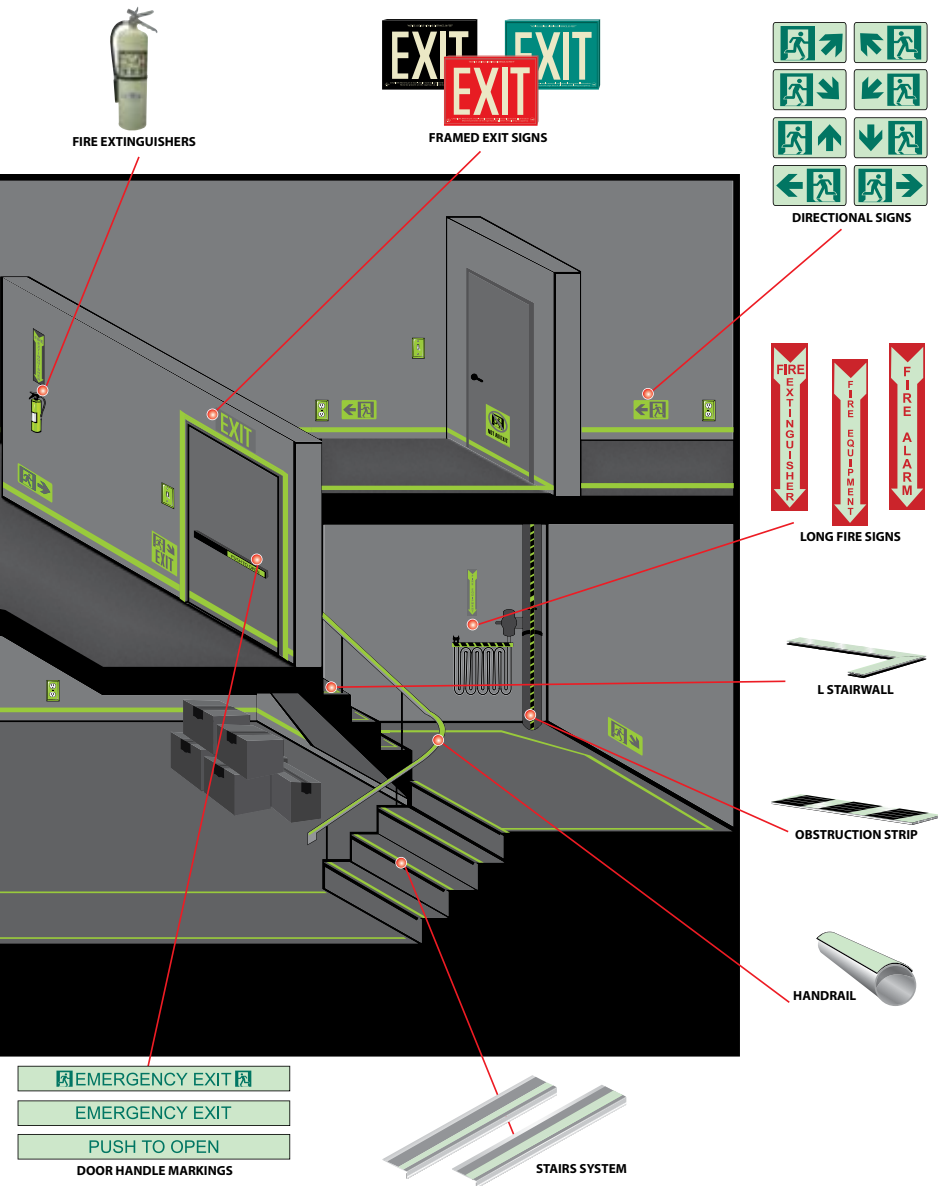
An emergency evacuation of a smoke-filled building with no visibility can easily cause disorientation and panic, and worse, can be life threatening. Without a fail-proof clear outline of an egress path providing visible guidance, the possibility for slips, falls, injuries or fatalities increases dramatically.

A photoluminescent egress system provides a safe and reliable visual of the egress, showing all essential outlines of the path such as doors, stairwells, handrails, hallways, rooms, safety equipment and obstacles which protrude into the egress path. The glow-in-the-dark safety products use photoluminescent material that absorbs and stores ambient light, becoming immediately visible for many hours in a sudden blackout situation or smoky conditions.

Photoluminescent safety products are quickly becoming the preferred evacuation choice because they are reliable and fail-proof. They do not require electricity, back up generators or batteries which have a tendency to fail. Moreover, the photoluminescent products eliminate the cost of energy, maintenance and replacement.

The only 100% reliable egress system for safe evacuation

Photoluminescent products are the only 100% fail-proof egress system which provides continuously visible guidance to safely evacuate everyone from a building in complete darkness.



Please contact your sales representative for more information.

Prevents slips, falls and injuries

With the installation of Safety Glow egress products, slips and falls are greatly reduced in darkened emergency conditions, thus reducing your liability.

Easy installation, maintenance free, long lasting

Safety Glow photoluminescent products are easy to install, relatively maintenance free and last for many years.

Meets building codes and norms

Photoluminescent safety product by STANDARD are widely accepted by government agencies and safety compliance organizations:

- The Canadian Construction Materials Center (CCMC)
- The National Fire Protection Association (NFPA)
- The International Code Council (ICC) -for UL924 compliant exit signs used above doors and in low-level locations.
- Building Codes - IBC, ICBO, BOCA, SBCCI

UNFRAMED EXIT SIGNS

Features

- Maintenance free, 25+ year life
- Designed to glow in total darkness
- CCMC (Canadian Construction Materials Center)
- Listed to UL 924 through UL
- Meets NFPA Life Safety Code 101 and OSHA requirements
- Meets current building codes: IBC, ICBO, BOCA SBCCI, NFPA
- CBO ES Report # ER-6040
- No wiring, batteries, electricity maintenance

Applications

- Office buildings
- Entertainment venues
- Retail applications
- Medical buildings
- Industrial applications



59008



59009

Order code	Description	Dimensions	Dimensions
		H x W	H x W
59008	GLOW BRI PRINTED FRAMLESS EXIT SIGN RED	7.5 in. x 13 in.	190.5 mm x 330.2 mm
59009	GLOW SIGN PRINTED FRAMLESS SRT RED	7.5 in. x 13 in.	190.5 mm x 330.2 mm

FRAMED EXIT SIGNS

Features

- Unparalleled in reliability
- Utilize the latest in photoluminescent technology
- Reduce the risk of panic or injury during evacuation
- Creates peace of mind
- Saves on energy costs
- Immediately visible
- Clearly recognizable

Applications

- Office buildings
- Entertainment venues
- Retail applications
- Medical buildings
- Industrial applications



59004



59006

Order code	Description	Dimensions	Dimensions
		H x W	H x W
59004	GLOW EX RED 1F WALL W/MOUNTING BRACKET	8 in. x 15 in.	203.2 mm x 381 mm
59005	GLOW EX RED 2F WALL WO/ MOUNTING BRACKET	8 in. x 15 in.	203.2 mm x 381 mm
59006	GLOW SR RED 1F WALL W/MOUNTING BRACKET	8 in. x 15 in.	203.2 mm x 381 mm
59007	GLOW SR RED 2F WALL WO/ MOUNTING BRACKET	8 in. x 15 in.	203.2 mm x 381 mm

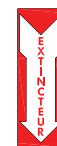
FIRE SAFETY SIGNS

Features

- Helps make vital emergency equipment easy to find
- Convey identification and safety messages clearly and effectively
- Flexible polyester
- Peel and stick

Applications

- Long hallways
- Large rooms



59042



59043



59044



59045

Order code	Description	Dimensions	Dimensions
		H x W	H x W
59042	GLOW P&S 12\"X4\" EXTINGUEUR	12 in. x 4 in.	304.7 mm x 101.6 mm
59043	GLOW P&S 18\"X4\" EXTINGUEUR	18 in. x 4 in.	457.2 mm x 101.6 mm
59044	GLOW P&S 12\"X4\" FIRE EXTINGUISHER	12 in. x 4 in.	304.7 mm x 101.6 mm
59045	GLOW P&S 18\"X4\" FIRE EXTINGUISHER	18 in. x 4 in.	457.2 mm x 101.6 mm

EXIT SIGNS

Features

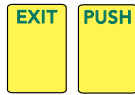
- Flexible laminated film, coated with a permanent acrylic pressure-sensitive adhesive and backed by poly-coated release liner
- No wiring, no batteries, no electricity, no maintenance
- This product line is approved for NYC LL26, MEA # 241-05-m



59038



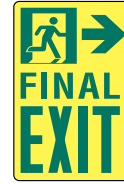
59039



59035 59036



59031



59010



59013



59020



59018



59023



59014



59017

Order code	Description	Dimensions	Dimensions
		H x W	H x W
59010	FINAL EXIT RMAN RIGHT, RIGHT ARROW POLY	14 in. x 10 in.	355.6 mm x 254 mm
59011	FINAL EXIT RMAN LEFT, LEFT ARROW POLY	14 in. x 10 in.	355.6 mm x 254 mm
59012	FINAL EXIT RMAN LEFT, UPPER LEFT ARROW	14 in. x 10 in.	355.6 mm x 254 mm
59013	FINAL EXIT RMAN RIGHT, UPPER RIGHT ARROW	14 in. x 10 in.	355.6 mm x 254 mm
59014	EXIT LOBBY RMAN LEFT, LEFT ARROW POLY	8 in. x 18 in.	203.2 mm x 457.2 mm
59015	EXIT LOBBY RMAN RIGHT, RIGHT ARROW POLY	8 in. x 18 in.	203.2 mm x 457.2 mm
59016	EXIT LOBBY RMAN LEFT, UPPER LEFT ARROW	8 in. x 18 in.	203.2 mm x 457.2 mm
59017	EXIT LOBBY RMAN RIGHT, UPPER RIGHT ARROW	8 in. x 18 in.	203.2 mm x 457.2 mm
59018	EXIT RMAN LEFT WO/ARROW POLY	5.25 in. x 12.5 in.	133.3 mm x 317.5 mm
59019	EXIT RMAN RIGHT WO/ARROW POLY	5.25 in. x 12.5 in.	133.3 mm x 317.5 mm
59020	NOT AN EXIT RMAN POLY	8.5 in. x 6 in.	215.8 mm x 152.4 mm
59021	RMAN RIGHT, RIGHT ARROW POLY	5.25 in. x 9 in.	133.3 mm x 228.6 mm
59022	RMAN LEFT, LEFT ARROW POLY	5.25 in. x 9 in.	133.3 mm x 228.6 mm
59023	RMAN LEFT, DOWN ARROW POLY	5.25 in. x 9 in.	133.3 mm x 228.6 mm
59024	RMAN RIGHT, UP ARROW POLY	5.25 in. x 9 in.	133.3 mm x 228.6 mm
59025	RMAN RIGHT, UPPER RIGHT ARROW POLY	5.25 in. x 9 in.	133.3 mm x 228.6 mm
59026	RMAN LEFT, UPPER LEFT ARROW POLY	5.25 in. x 9 in.	133.3 mm x 228.6 mm
59027	RMAN RIGHT, DOWN RIGHT ARROW POLY	5.25 in. x 9 in.	133.3 mm x 228.6 mm
59028	RMAN LEFT, DOWN LEFT ARROW POLY	5.25 in. x 9 in.	133.3 mm x 228.6 mm
59029	EXIT RMAN RIGHT, UP ARROW POLY	9.5 in. x 8.5 in.	241.3 mm x 215.8 mm
59030	EXIT RMAN LEFT, UP ARROW POLY	9.5 in. x 8.5 in.	241.3 mm x 215.8 mm
59031	EXIT RMAN RIGHT, UPPER RIGHT ARROW POLY	9.5 in. x 8.5 in.	241.3 mm x 215.8 mm
59032	EXIT RMAN LEFT, UPPER LEFT ARROW POLY	9.5 in. x 8.5 in.	241.3 mm x 215.8 mm
59033	EXIT RMAN RIGHT, DOWN RIGHT ARROW POLY	9.5 in. x 8.5 in.	241.3 mm x 215.8 mm
59034	EXIT RMAN LEFT, DOWN LEFT ARROW POLY	9.5 in. x 8.5 in.	241.3 mm x 215.8 mm
59035	EXIT RIGID DOOR HANDLE MARKER GREEN	6 in. x 4 in.	152.4 mm x 101.6 mm
59036	PUSH RIGID DOOR HANDLE MARKER GREEN	6 in. x 4 in.	152.4 mm x 101.6 mm
59038	GLOW P&S EXIT RED 8X11	11 in. x 8 in.	279.4 mm x 203.2 mm
59039	GLOW P&S SORTIE RED 8X11	11 in. x 8 in.	279.4 mm x 203.2 mm

STAIR SIDE MARKINGS

Features

- Plastic: Ideal for low traffic stairwells
- Approved by NYC Department of Buildings, Materials and Equipment Acceptance Division (MEA)
- Competitively priced
- Aluminum: The Ultra High Performance is the ultimate in life safety with a glow that is 350% higher than PVC
- This product far exceeds code requirements set by NYC LL26, APTA, ICC/IBC (E84)

Applications

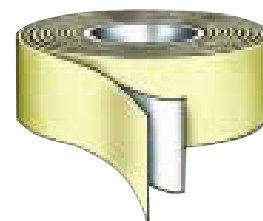
- Low-level emergency egress
- Low traffic stairwells (Plastic)
- Upscale environments (Aluminum)



Order code	Description	Dimensions	Dimensions
		H x W	H x W
59040	Stair Marker (L) 1" (pair) PVC	9 in. x 3 in.	228.6 mm x 76.1 mm
59041	Stair Marker (L) 1" Pair Alum HP	9 in. x 3 in.	228.6 mm x 76.1 mm

ABRASIVE TAPE

- Construction:** Abrasive grain-coated plastic film, with one side pressure-sensitive adhesive and protected by removable liner
- Thickness:** 0.35 in. (8.89 mm) +/- 4%
- Color:** White / green (normal light conditions)
- Illumination:** Highly visible yellow / green
- Durability:** Long life, durable and resistant to traffic, water and grease
- Norms :** Exceeds OSHA Standards for non-slip protection on hazardous surfaces; Motor Vehicle Safety Standard No.302; MIL-D-17951c (ships) and ASTM E 2030-02, ASTM E 2072-00, ASTM E 2073-02
- Installation:** Position, peel-off backing and apply to dry, non-oily surface
Minimum application temperature 10 °C (50 °F)
- Surfaces compatibility:** Painted wood, painted metal, sealed concrete and most non porous surfaces
- Storage life:** One year at 22 °C (72 °F) with 50% relative humidity
- Availability:** Roll lengths: 60 ft. (18.28 m)
Roll widths: 2 in. (50.8 mm) 3 in. (76.19 mm)
4 in. (101.6 mm) 6 in. (152.39 mm)
12 in. (304.79 mm) 18 in. (457.2 mm)
24 in. (609.59 mm)
Die cuts: 6 in. (152.39 mm) x 24 in. (609.59 mm)
6 in. (76.19 mm) arrows; 3 in. (76.19 mm) circles
Custom die cuts and other sizes available upon request
12 rolls per case



Order code	Description	Dimensions	Dimensions
		H x W	H x W
59046	GLOW HI LUM DEMARCATION TAPE 1" x 60'	1 in. x 60 ft. roll	25.4 mm x 18.28 m
59047	GLOW HI LUM ANTI-SLIP SURFACE TAPE	1 in. x 60 ft. roll	25.4 mm x 18.28 m

PHOTOLUMINESCENT TAPE

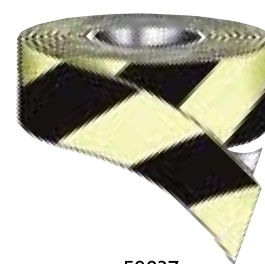
Features

- Flexible laminated finish
- Immediately visible
- Provides a clearly illuminated evacuation route
- Easily affixes to most wood, metal, concrete, plaster and painted surfaces

Applications

- Walls
- Columns
- Handrails
- Stairways/baseboards
- Around door frames
- Low-level emergency egress

Construction:	Flexible laminated, printed film, coated with permanent acrylic pressure-sensitive adhesive and backed by poly coated release liner
Thickness:	0.12 in. (3.04 mm) +/- 10% (film/adhesive)
Color:	White / black striping (normal light conditions)
Illumination:	Highly visible yellow / green
UV stability:	Excellent
Installation:	Position, peel-off backing and apply to dry, non-oily surface. Minimum application temperature 10°C (50°F)
Availability:	Rolls of 1 in. x 100 ft. (25.4 mm x 30.48 m) 12 rolls per case



59037

Order code	Description	Dimensions	Dimensions
		H x W	H x W
59037	GLOW BRITE DEM BLACK STRIP TAPE 1"X100	1 in. x 100 ft. roll	25.4 mm x 30.48 m

Construction:	Flexible laminated film, coated with permanent acrylic. Pressure-sensitive adhesive and backed by poly-coated release liner
Thickness:	0.010 in. (0.254 mm) +/- 10% (film/adhesive)
Color:	White / green (normal light conditions)
Illumination:	Highly visible yellow / green
UV stability:	Excellent
Installation:	Position, peel-off backing and apply to dry, non-oily surface Minimum application temperature 10°C (50°F)
Availability:	Rolls of 1 in. (25.4 mm) or 2 in. (50.8 mm) x 100 ft. (30.48 m) Custom sizes and shapes available upon request 12 rolls per case



59048

Order code	Description	Dimensions	Dimensions
		H x W	H x W
59048	TAPE LAMINATED 1"x 100' ROLLS 50-F1	1 in. x 100 ft. roll	25.4 mm x 30.48 m



www.standardpro.com

Standard Products Inc.
5905 chemin de la Côte-de-Liesse
Saint-Laurent, QC
Canada, H4T 1C3
T.: (514) 342-1199
F.: (514) 342-6261
1 (800) 361-6965



Atlantic, Western
Quebec, Ottawa
(800) 361-6965

Eastern Quebec
(866) 686-3337

Ontario, Manitoba
Saskatchewan
(800) 268-7702

Alberta,
British Columbia
(800) 945-4999